



# Welcome to Malmö University

From day one, our goal has been to become Sweden's most socially committed university. Our education and research is multidisciplinary and conducted in close collaboration with the city and surrounding community. This provides for a high-quality study experience with a strong connection to the world of today. Our philosophy has given us an international reputation of educating engaged students who are well-prepared for the challenges of the future.

## Apply to Malmö University

### Application and Deadlines

For studies starting September 2023

All applications to Malmö University are made online through [universityadmissions.se](http://universityadmissions.se)

INTERNATIONAL APPLICATION, FIRST ADMISSION ROUND	
Application period:	Oct 2022 – Jan 2023
Application fee/fee exemption:	Feb 2023
Documentation deadline:	Feb 2023
Notification of selection results:	April 2023

Please note: We encourage all international students to apply in the first round. The second round is an alternative for European citizens who do not need a residence permit to study in Sweden.

NATIONAL APPLICATION, SECOND ADMISSION ROUND	
Application period:	mid March– mid April 2023
Application fee/fee exemption:	May 2023
Documentation deadline:	June 2023
Notification of selection results:	July 2023

### Tuition Fees and Scholarships

Citizens of countries outside of the EU/ EEA and Switzerland are required to pay application and tuition fees. Malmö University offers scholarships at the master's level to talented international students. Scholarships cover between 75–100% of the tuition fee. For more information visit [mau.se/scholarships](http://mau.se/scholarships).

Full scholarships are available from the Swedish Institute at [studyinsweden.se](http://studyinsweden.se).

### Cost of Living

Living costs depends on your personal lifestyle. Here's an average monthly budget provided in Swedish SEK:

Food	SEK 2,000
Accommodation	SEK 4,700
Local travel	SEK 550
Phone/internet	SEK 300
Hobby/leisure, miscellaneous	SEK 1,450
<hr/>	
Total:	SEK 9,000 (around €850 or \$1,000)

### Admission Requirements

**ENGLISH REQUIREMENTS**  
Most students are required to submit satisfactory results from a standardised test as proof of English proficiency. The following tests/certificates are acceptable:

- ☐ IELTS Academic (6.5)
- ☐ TOEFL (90 internet / 575 paper)
- ☐ Cambridge Michigan Language Assessment (90)
- ☐ Pearson PTE Academic (62)
- ☐ Cambridge English Language Assessment (advanced)

It may also be possible to fulfil English language requirements from your upper-secondary school or previous academic studies.

**REQUIREMENTS FOR BACHELOR'S**  
A completed upper-secondary school education.

**REQUIREMENTS FOR MASTER'S**  
A bachelor's degree equivalent to a Swedish undergraduate degree (180 higher education credits). Most programmes require your degree to have a specialisation within a certain area or subject. Some programmes require additional supporting documents.

Students who do not hold a bachelor's degree, but are registered for the last semester of a programme leading to such a degree, may be conditionally admitted.



# Study at

# Malmö University

# Sweden

Bachelor's & Master's Programmes  
2022/2023

LEARN MORE AT

[MALMOUNIVERSITY.SE](http://MALMOUNIVERSITY.SE)



## Orientation Programme

All international students admitted to Malmö University are invited to participate in our week long Orientation Programme. It is a great way to learn about studying at Malmö University, and will help you settle into the social and cultural life of the city.

For syllabus, student testimonials and more, visit [www.malmouniversity.se](http://www.malmouniversity.se)

## Bachelor's programmes

3 YEARS • 180 CREDITS

- European Studies – Politics, Societies and Cultures
- Human Rights
- International Migration and Ethnic Relations
- International Relations
- Interaction Design
- Peace and Conflict Studies

Selected bachelor's programmes can be continued at a master's level and all provide the opportunity for an internship and/or a chance to study abroad for one or two semesters.

## Master's programmes

1 YEAR • 60 CREDITS

- Communication for Development (part-time, distance learning)
- Interaction Design
- International Migration and Ethnic Relations
- Leadership for Sustainability
- Media and Communication Studies: Culture, Collaborative Media and Creative Industries (flexible/distance learning)
- Political Science: Global Politics and Societal Change
- Sport Sciences: Sport in Society
- Teaching and Learning in Higher Education (flexible/distance learning, 50% study pace)

2 YEARS • 120 CREDITS

- Biomedical Surface Science
- Computational Materials Science
- Computer Science: Applied Data Science
- Computer Science: Innovation for Change in a Digital Society
- Culture and Change: Critical Studies in the Humanities
- Criminology
- Education: Educational Theory
- English and Education
- Interaction Design
- International Migration and Ethnic Relations
- Leadership and Organisation: Societal Challenges and Organisational changes
- Media and Communication Studies: Culture, Collaborative Media and Creative Industries (flexible/distance learning)
- Media Technology: Strategic Media Development
- Nordic Urban Planning Studies
- Political Science: Global Politics
- Sport Sciences: Sport in Society
- Teaching and Learning in Higher Education (flexible/distance learning, 50% study pace)
- Urban Studies
- Urban Studies: Urban Business and Development – Real Estate and Transport

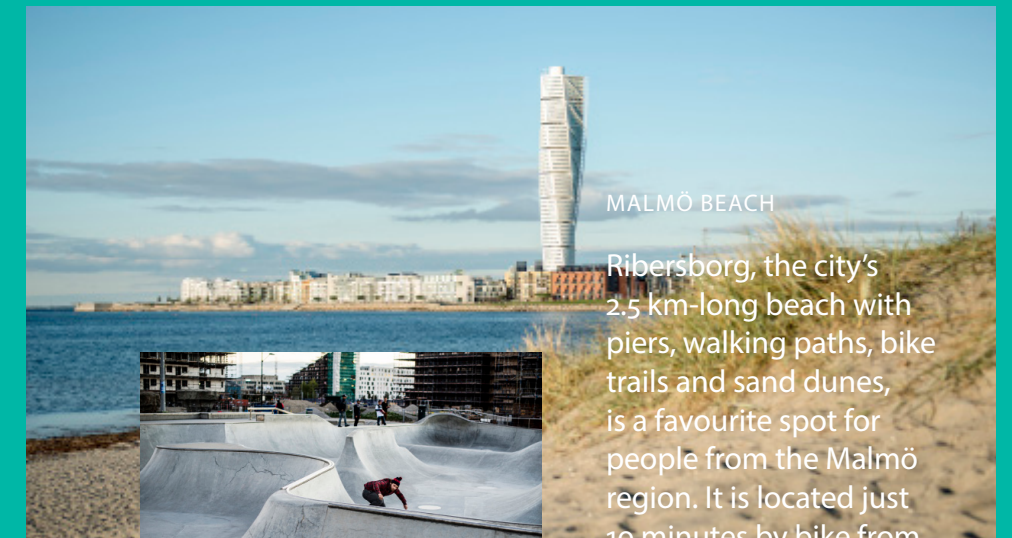
## PhD Studies

If you would like to continue your studies beyond your master's degree, it is possible to progress to doctoral studies. A PhD programme corresponds to four years of full-time study (240 HE credits) and is completed with a doctoral degree. Most research positions in Sweden are offered as paid jobs, and as such are announced as vacancies. You apply directly to the department of interest when a position is advertised.

# HELLO MALMÖ!

### CITY OF CULTURE

Malmö boasts a vibrant city life with night clubs, music venues, restaurants and bars. As a university student, you can get a 50% discount at selected venues.



### MALMÖ BEACH

Ribersborg, the city's 2.5 km-long beach with piers, walking paths, bike trails and sand dunes, is a favourite spot for people from the Malmö region. It is located just 10 minutes by bike from campus. Experiencing the open-air bath during winter is a must if you want to get a genuine Swedish experience!

### New lease of life for the harbour

The former industrial neighbourhood of Western Harbour has transformed into a sustainable urban district. Here locals come to swim, climb, skate and visit the local makers' space.



### One region, two cities

Located only 30 minutes from the Danish capital Copenhagen, Malmö is in the very heart of the dynamic Öresund Region. It keeps its small town charm while gaining the benefits of a big city.

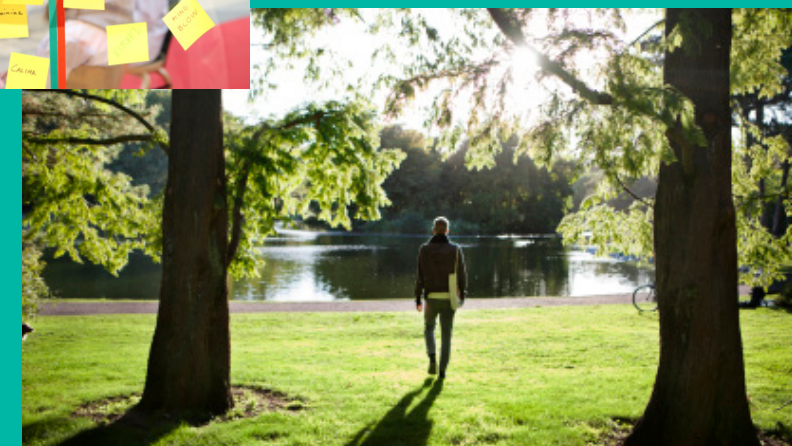
### Bike friendly

Malmö is the fifth most bicycle friendly city in the world, and it is easy to see why. There are 510 kilometres of cycle paths criss-crossing the city.



### Innovative

Malmö has been ranked as one of the world's most innovative cities, with eight start-up companies founded every day.



### PARK CITY

Malmö is widely known as the 'city of parks', offering green areas for relaxing, walking, biking and exercising all year round.

# Hello Malmö!